

Los Angeles County  
**Bicycle Master Plan Update**



Safe. Equitable. Planned for you.



**Virtual Community Meeting #1** | *Reunión Comunitaria Virtual #1*  
Thursday, May 11, 6-7:30 p.m.

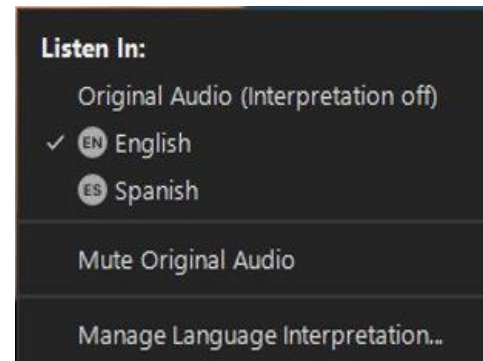
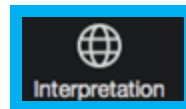
Welcome! | *¡Bienvenido!*  
We will begin in a few moments. | *Comenzaremos en unos momentos.*



## Spanish Interpretation / Interpretación en Español



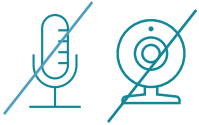
- Click on the “Interpretation” icon
- Select Spanish to hear the interpretation audio
- *Haga clic en el icono de “Interpretation”*
- *Escoja la opción para escuchar español*



# Meeting Format



Today's meeting is being recorded.



Attendee cameras are off and microphones are muted.



Questions can be submitted throughout the presentation using the **chat** function. The team will respond to questions during the Q&A session.



To use English closed captioning, select the "cc" at the bottom of your Zoom screen.



Q&A session to follow the presentation. Please use the *'Raise Hand'* icon to ask a question verbally.

# Today's Speakers



**Sarah Ahmed, P.E.**  
Civil Engineer  
Los Angeles County Public Works



**Maria Yanez-Forgash**  
Project Manager  
Arellano Associates



**Roger Pelayo & Lila Singer-Berk**  
Project Managers  
Toole Design

# Agenda



6:00 PM

## **Presentation**

*What is the Bicycle Master Plan?*

*What have we learned so far?*

6:20 PM

## **Breakout Rooms**

*What's your experience like biking in unincorporated Los*

*Angeles County?*

7:00 PM

## **Next Steps**

7:15 PM

## **Q&A**

7:30 pm

## **Adjourn**

## ZOOM POLL #1:

---



**How often do you bike?**

***¿Con qué frecuencia anda en bicicleta?***

- 1) I do not bike much if at all / *No uso mucho la Bicicleta***
- 2) I bike a few times a month / *Ando en bicicleta varias veces al mes***
- 3) I bike every week / *Ando en bicicleta cada semana***

# What is the Bicycle Master Plan?



Los Angeles County  
**Bicycle Master Plan Update** 

Safe. Equitable. Planned for you.





*Public Works*

LOS ANGELES COUNTY

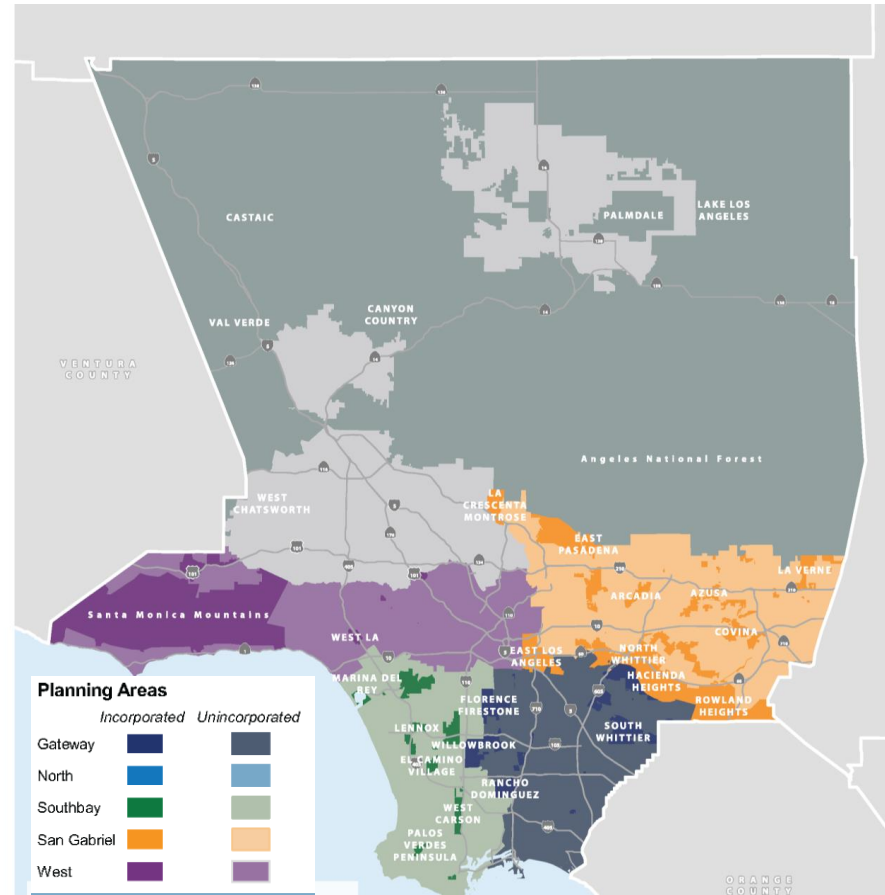




# What is the Bicycle Master Plan (BMP)?



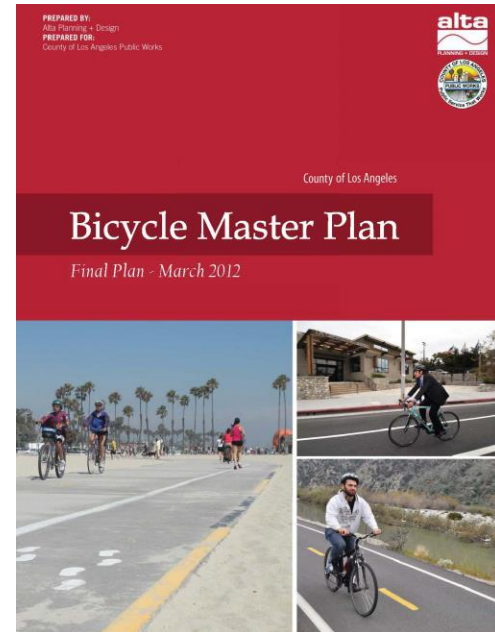
- Establishes a vision for the future of biking in the County
- Updates the 2012 Bike Master Plan
- Serves as a guide for the development of safe and accessible bikeways and paths within unincorporated Los Angeles County and along County flood control district channels



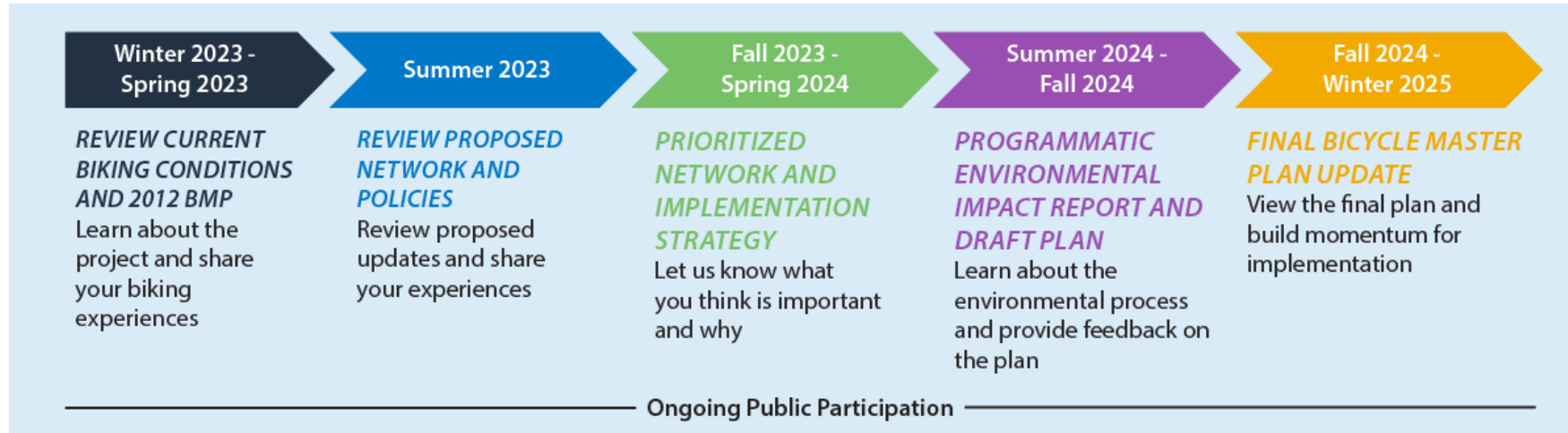
# What will the BMP Accomplish?



- Revisit the **feasibility of unconstructed bikeways** from the 2012 plan
- Incorporate **new policies to share bikeway facilities with micro-mobility devices**
- Identify **first/last mile bikeway improvements** to further connect to transit stations and bus stops
- Prepare for the **Programmatic Environmental Impact Report**
- Develop **Design Guidelines**



# Project Timeline



# Draft Project Goals



**Vision:** *Make bicycling safe, convenient, and accessible for all ages and abilities in Los Angeles County*



## Goal #1: Equity

Invest in underserved, pollution burdened communities that are most dependent on active transportation.



## Goal #3: Mobility

Increase the number of biking and multimodal trips.



## Goal #2: Safety

Prioritize bicycle projects that improve the safety of our streets.



## Goal #4: Accountability

Be responsive, transparent, and accountable to our communities and regional partners.

# What Have We Learned so Far?



Los Angeles County  
**Bicycle Master Plan Update** 

Safe. Equitable. Planned for you.





---

True or **False**: Crashes in Unincorporated LA County are trending upwards

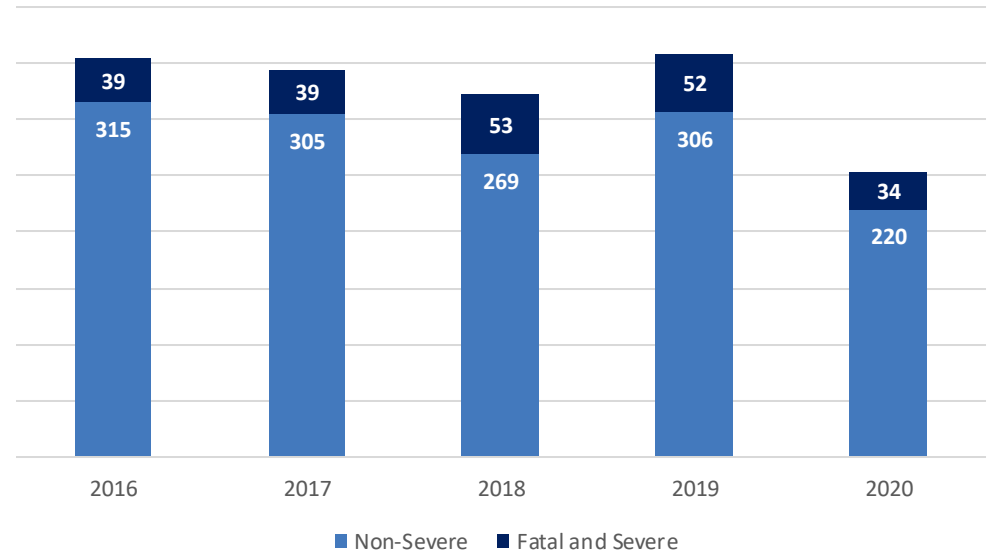


# Safety



*Crash rates are stagnant but have remained high. 2020 is outlier because of the pandemic.*

Unincorporated LA County Bicycle Crashes





---

**True** or False: There are more crashes per mile in disadvantaged communities

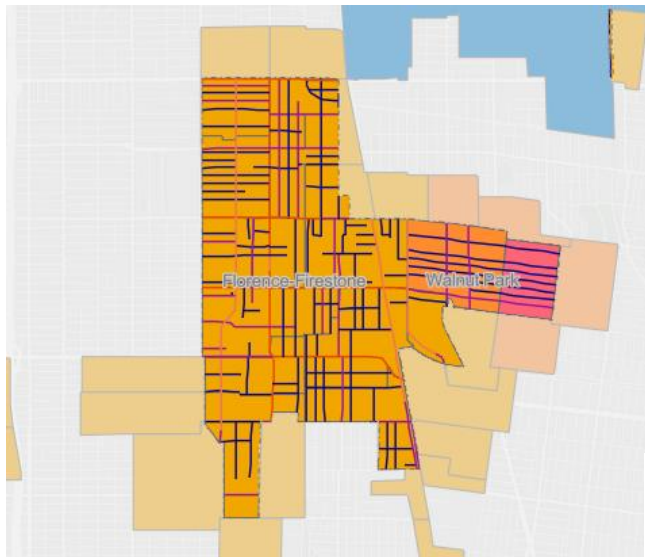




# Equity



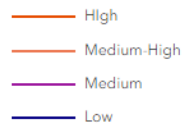
Streets in disadvantaged communities have crash rates **more than five times higher** than non-disadvantaged communities



Cal EnviroScreen Score



Crash Density



*Example: Florence-Firestone*

What communities are we focusing on? Communities with:

1. High poverty levels
2. Concentrations of People of Color
3. Disproportionate pollution burdens



---

**True** or False: There are more than 130 multi-use path miles in unincorporated LA County



# Mobility



More than half of the current bikeway miles in unincorporated LA County are Class I multi-use paths.

1970–1974 (5 years)



1975–2012 (37 years)

1975 BIKE MASTER PLAN



2012–today (10 years)

2012 BIKE MASTER PLAN UPDATE



\*average



# Accountability



## Challenges

- Unincorporated neighborhoods are disconnected
- Flood channels have lots of owners
- Funding does not always meet the need
- Construction takes a long time



# POLL #2: Which streets would you feel comfortable riding on? *(select all that apply)*



## 1. Painted bike lane



## 2. Buffered painted bike lane



## 3. Bike lane with physical barrier



# POLL #3: Which streets would you feel comfortable riding on? *(select all that apply)*



**1) Shared roadway**



**2) Narrow bikeable shoulder**



**3) Wide bikeable shoulder**



**4) Side Path along Interstate**



# Questions



Los Angeles County  
**Bicycle Master Plan Update** 

Safe. Equitable. Planned for you.



# What is Your Experience Biking in Unincorporated LA County?



Los Angeles County  
**Bicycle Master Plan Update**



Safe. Equitable. Planned for you.



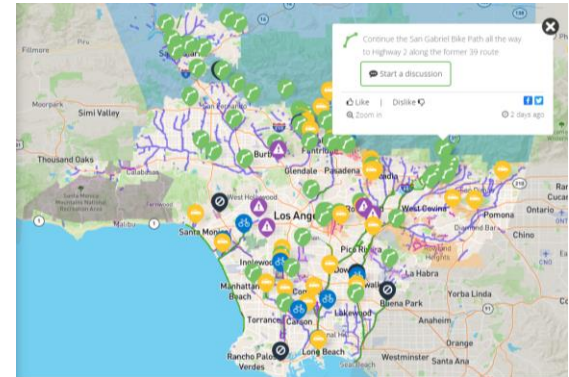


# What Have We Heard so Far?



From **7 community events** and 200+ comments on the public survey, we've heard:

- **Excitement for safer bicycling** and to help raise project awareness
- Desire for **additional separation from cars**
- Interest in **improving connections** to and creating additional river paths
- Interest in **safe places for youth and families** to ride



# Questions for Today

---



- Where do you want more separation from cars?
- Where do you face barriers that you can't get through, like fences or freeways that you can't cross?
- Where are the challenging intersections?
- Where do you want bike racks, bike storage, or other bike amenities?
- What routes do you want to be able to ride?

# Survey Demonstration



**Public Works**  
LOS ANGELES COUNTY

Drag to comment > Can't get through or across here Challenging intersection Want more separation from cars Add bike racks/storage/bike amenities A route I want to bike

**About**

[Haga clic aquí para español](#)

The County of Los Angeles Department of Public Works (PW) is working to update the Los Angeles County Bicycle Master Plan (BMP). The current BMP was last updated in 2012 and established a vision for the future of biking in the County. The BMP will propose new bikeways, revisit unconstructed bikeways from the 2012 plan, address micro-mobility devices, and identify first/last mile bikeway connections to transit stations and bus stops.

Your input is valuable to this update and will inform locations and types of project recommendations. Please let us know **locations where you see issues** and **routes you would like to bike**.

**HOW TO USE THE MAP:**

1. Zoom into an area on the map
2. **Locations where you see issues:** Drag a marker from the top of the page (as many as you want!) to a location in unincorporated LA County or along the flood channels where you see issues and add your comment or photos.
  - a. **Want more separation from cars:** Locations where drivers are traveling too fast, there's not enough space to bike, there are a lot of driveways to cross, etc.
  - b. **Can't get through or across here:** Locations where you hit a barrier to biking, such as a closed gate, highway crossing, no marked crossing, or no curb ramp where you need one.

**Leave us your comment**

Comment\* (Required)

Type comment here...

First name  Last name

Zip code

Attach an optional photo

Attach

Supports png, jpeg, gif and heic

Leave your comment here 480 characters left

Your email

Remember

**Legend**

- LA County Boundary
- LA County Owned Flood Channels
- Unincorporated Communities
  - Gateway Cities
  - North LA County
  - South Bay
  - San Gabriel Valley
  - West LA County
- LA County Existing Bikeways - Unincorporated
  - Bike Path (Class I)
  - Bike Lane (Class II)
  - Bike Boulevards and

# Breakout Room Instructions



## How to self-select a breakout room:

- Click **Breakout Rooms** in your meeting controls
- Hover your pointer over the number to the right of breakout room you wish to join, click **Join**, then confirm by clicking **Join**

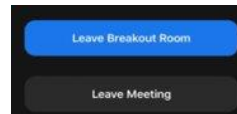
## How to join a breakout room:

- The host will invite you to join a breakout room
- Click **Join**
- If you choose **Later**, you can join by clicking the **Breakout Rooms** in your meeting controls.
- If you would like to join a breakout room that will be conducted in Spanish, there is no need to select a Breakout Room. Stay in the Main Room.



## How to leave a breakout room:

- Click **Leave Breakout Room**
- When the host ends the breakout rooms, you will be notified and be given 60 seconds to return to the Main Room.



## Breakout Group Assignments

*Where do you spend most of your time riding?*

### Main Room

- Spanish-speaking countywide

### Breakout Room #1

- **North LA County**
- **San Gabriel Valley**

### Breakout Room #2

- **West LA County**
- **South Bay**
- **Gateway Cities**



## Breakout Room 1

### PLANNING AREAS

INCORPORATED UNINCORPORATED

GATEWAY CITIES



NORTH



SOUTH BAY



SAN GABRIEL VALLEY



WEST



## Breakout Room 2

# Share-out

---



- What common issues did you hear across multiple locations?
- What surprised you?
- What themes emerged as top priorities?

# Next Steps

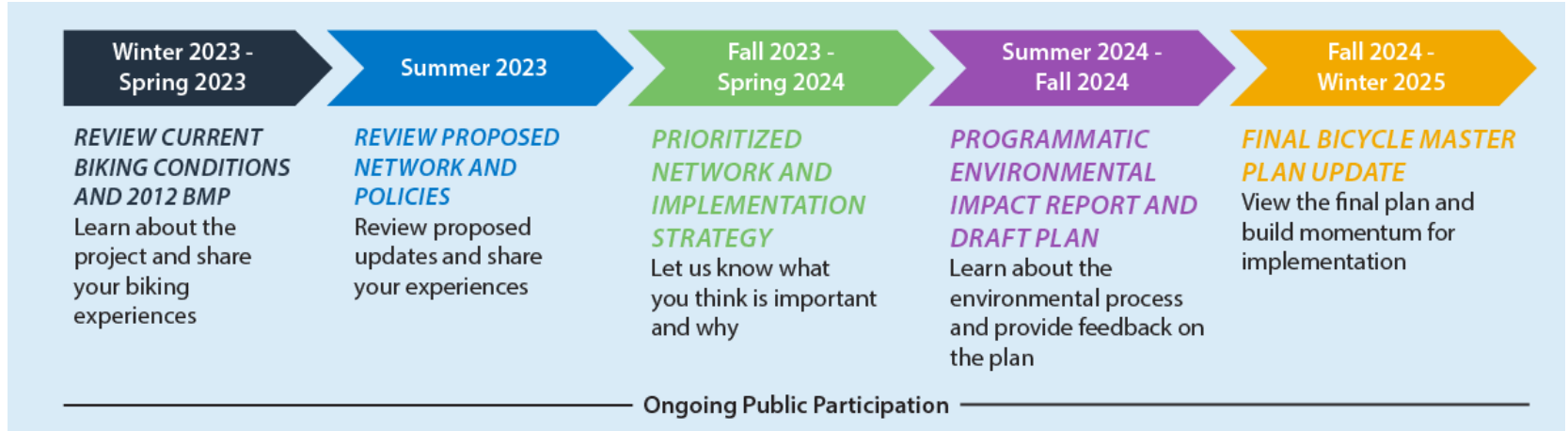


Los Angeles County  
**Bicycle Master Plan Update** 

Safe. Equitable. Planned for you.



# Next Steps





# How to Stay Involved



## Attending Community Events

Engage with local communities where they already are



## Digital Outreach

Social media, e-mail, and text campaigns



## Virtual Workshops & in Person Open Houses

Time to provide in depth input on what is important to you



## Public Survey

Collect feedback on specific locations



## CBO Partners

10 CBOs paid to spread the word, provide feedback, and support events



## In Person Outreach

Flyers and banners distributed in underserved neighborhoods

# Q&A



Los Angeles County  
**Bicycle Master Plan Update** 

Safe. Equitable. Planned for you.

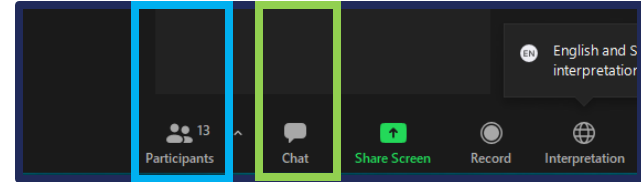


# Question and Answer Session - How to Participate



## Via web

- Verbal Comments: Click Participants > “raise hand”
- Type comments: Click the “Chat” function
- Include contact information:  
Name and organization (if any)
- When announced, unmute your audio, you can then ask you question(s)
- You will be re-muted once you complete your comment(s)



## Via the phone (calling in)

- Press “\*9” on your keypad to “raise hand”
- You will be announced by the last four digits of your phone number
- Press “\*6” to unmute your audio
- You will be re-muted once you complete your comment(s)

# Help Spread the Word!



## Upcoming Events:

Saturday, May 13, 2023, 10am-12pm  
Chester L Washington Golf Course, West Athens

Tuesday, May 16th, 2023, 6 – 7:30 pm  
Virtual Meeting

## Calendar of Additional Events:

<https://pw.lacounty.gov/tpp/bmp/getinvolved>



**Public Survey:** open through May 30<sup>th</sup>

<https://bit.ly/lacbmpsurvey>

<https://bit.ly/lacbmpsurveyesp>

**Social Media/Video link to share**

<https://youtu.be/GVWc3W2ShKw>



**Sign up to receive email or text updates**

<https://bit.ly/lacbmpsign-up>

# Thank you for participating! Stay Connected!



info@lacountybikemasterplan.com



(866) 6LA-BIKE (652-2453)



pw.lacounty.gov/tpp/bmp/



@LACoPublicWorks

