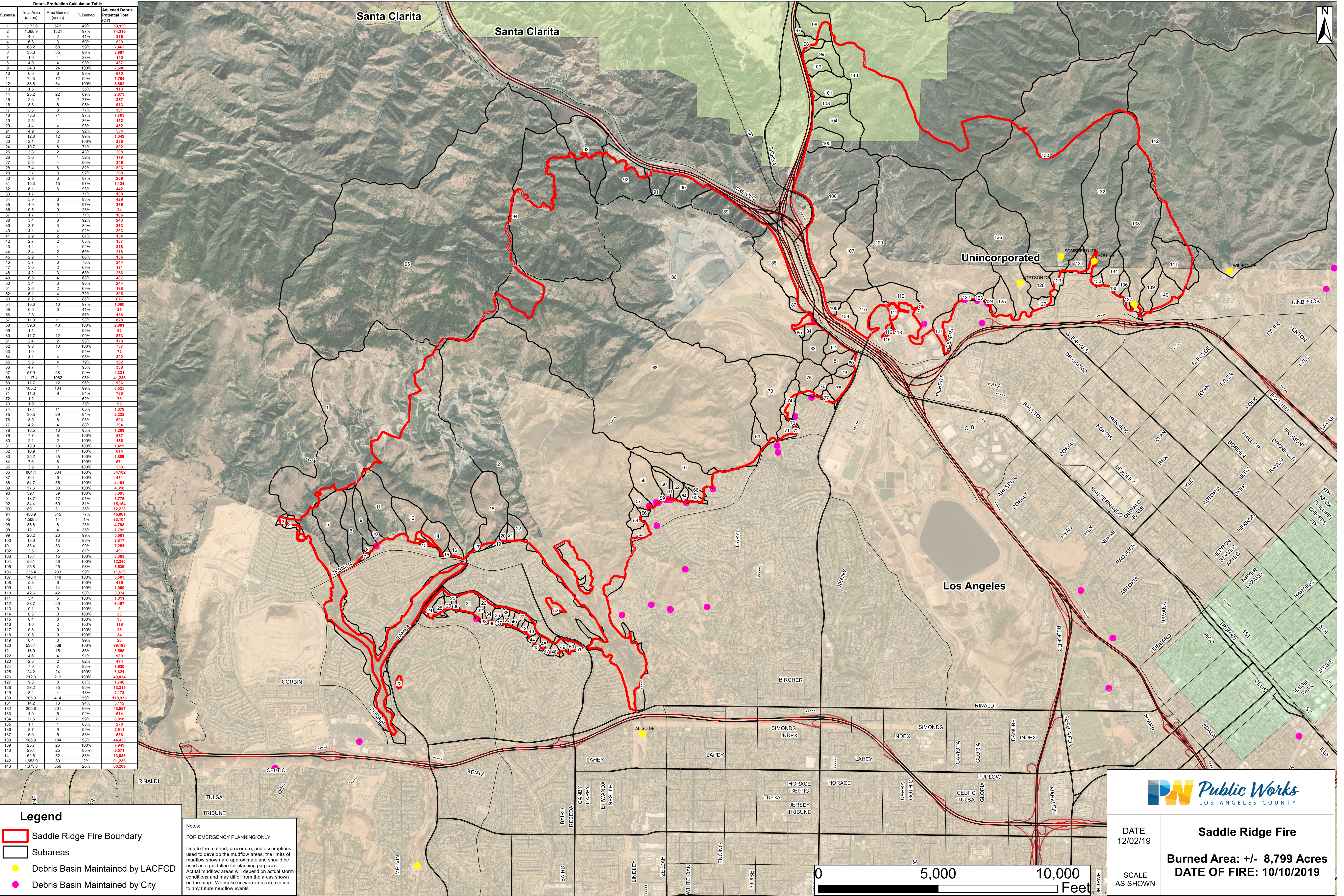


Subarea	Total Area (acres)	Area Burned (acres)	% Burned	Adjusted Debris Potential Total (CY)
1	1,173.6	571	49%	50,829
2	1,368.0	1,321	97%	74,316
3	4.0	2	41%	316
4	6.3	3	50%	328
5	69.2	68	99%	7,452
6	35.6	35	99%	3,987
7	1.9	1	28%	140
8	4.0	4	93%	437
9	24.0	24	100%	2,696
10	6.0	6	99%	670
11	72.3	72	99%	7,754
12	33.8	34	100%	3,802
13	1.5	1	35%	113
14	25.2	22	89%	2,673
15	2.6	2	77%	257
16	8.3	8	95%	913
17	3.6	3	77%	361
18	73.6	71	97%	7,763
19	2.5	1	36%	182
20	4.4	4	93%	492
21	4.9	5	92%	534
22	12.0	12	99%	1,349
23	2.1	2	100%	235
24	10.7	8	71%	802
25	3.8	2	43%	208
26	3.6	1	32%	179
27	5.5	4	66%	346
28	7.4	6	82%	606
29	3.7	3	92%	268
30	2.9	3	87%	206
31	15.3	13	97%	1,134
32	6.1	6	93%	442
33	1.7	1	71%	108
34	5.9	6	93%	429
35	4.9	5	97%	366
36	0.5	0	26%	24
37	1.7	1	71%	106
38	3.4	3	92%	243
39	3.7	3	89%	263
40	4.1	4	92%	283
41	2.2	2	87%	154
42	2.7	2	85%	167
43	4.4	4	92%	316
44	3.4	2	69%	218
45	2.2	1	66%	136
46	3.7	3	78%	244
47	3.0	2	69%	191
48	4.2	3	63%	256
49	6.5	4	68%	407
50	3.4	3	90%	244
51	2.6	2	69%	168
52	6.1	4	72%	395
53	8.2	7	86%	677
54	10.6	10	97%	1,000
55	0.5	0	41%	25
56	2.3	1	57%	138
57	11.0	11	98%	1,228
58	39.8	40	100%	2,981
59	1.1	1	95%	82
60	11.7	12	99%	873
61	2.4	2	98%	179
62	9.8	10	100%	737
63	1.0	1	94%	72
64	4.1	4	98%	302
65	5.5	4	79%	352
66	4.7	4	93%	338
67	57.9	58	99%	4,331
68	1,177.4	1,062	95%	41,236
69	12.7	12	98%	1,134
70	105.2	104	99%	6,528
71	11.0	9	84%	760
72	1.6	1	62%	73
73	1.9	1	35%	95
74	17.4	11	65%	1,079
75	30.5	29	94%	2,222
76	8.0	8	98%	596
77	4.2	4	88%	294
78	16.5	16	95%	1,209
79	7.7	8	100%	577
80	2.1	2	100%	158
81	18.9	19	100%	1,419
82	10.9	11	100%	814
83	25.2	25	100%	1,889
84	7.6	8	100%	568
85	3.5	3	100%	289
86	884.4	884	100%	34,102
87	5.0	6	100%	451
88	54.7	55	100%	4,101
89	57.6	58	100%	4,318
90	39.1	39	100%	3,095
91	18.7	17	91%	3,774
92	84.4	69	81%	15,154
93	89.1	31	35%	12,223
94	450.9	345	77%	45,061
95	1,508.0	14	1%	63,104
96	35.8	8	23%	4,798
98	12.1	4	35%	1,795
99	26.2	26	99%	5,681
100	13.0	13	99%	2,117
101	33.4	33	99%	7,251
102	2.5	2	81%	481
103	15.4	15	100%	3,363
104	56.1	56	100%	12,240
105	25.8	25	98%	5,539
106	235.4	233	99%	11,529
107	148.4	148	100%	8,503
108	5.8	6	100%	435
109	14.1	14	100%	1,060
110	42.6	42	98%	3,974
111	5.4	5	100%	1,071
112	28.7	29	100%	6,497
113	0.1	0	100%	9
114	0.3	0	100%	23
115	0.4	0	100%	33
116	1.6	2	100%	118
117	0.3	0	100%	25
118	0.5	0	100%	34
119	0.4	0	98%	28
120	538.1	538	100%	69,196
121	16.9	15	88%	3,585
122	4.6	4	91%	369
123	2.3	2	82%	474
124	7.9	7	83%	1,630
125	24.2	24	100%	6,621
126	212.3	212	100%	49,834
127	9.8	8	81%	1,748
128	37.2	35	95%	13,315
129	8.4	4	48%	2,173
130	705.3	414	59%	119,975
131	14.2	13	94%	5,112
132	205.8	201	98%	48,857
133	4.9	5	92%	614
134	21.5	21	96%	8,016
135	1.1	1	83%	270
136	8.7	9	99%	2,911
137	6.0	5	83%	888
138	186.9	184	98%	44,423
139	25.7	26	100%	7,849
140	29.4	25	85%	5,571
141	63.6	51	83%	13,036
142	1,653.9	30	2%	91,236
143	1,373.0	356	26%	80,209

Legend

- Saddle Ridge Fire Boundary
- Subareas
- Debris Basin Maintained by LACFCD
- Debris Basin Maintained by City

Notes:
FOR EMERGENCY PLANNING ONLY
Due to the method, procedure, and assumptions used to develop the mudflow areas, the limits of mudflow shown are approximate and should be used as a guideline for planning purposes. Actual mudflow areas will depend on actual storm conditions and may differ from the areas shown on the map. We make no warranties in relation to any future mudflow events.



Public Works
LOS ANGELES COUNTY

Saddle Ridge Fire

DATE: 12/02/19

SCALE: AS SHOWN

Burned Area: +/- 8,799 Acres
DATE OF FIRE: 10/10/2019